



OAKLANDS FARM SOLAR PARK

Applicant: Oaklands Farm Solar Ltd

Environmental Statement

Chapter 5 - Figures 5.6a – 5.9

January 2024

Document Ref: EN010122/APP/6.1/Fig 5.6a – 5.9

Revision: -

Planning Act 2008

Infrastructure Planning (Application: Prescribed Forms and Procedure) Regulations 2009 - 5(2)(a)

**Oaklands Farm Solar
Park - Environmental
Statement Volume 2**
Chapter 5:
Landscape and
Visual Figures 5.6 to
5.9

Final report
Prepared by LUC
January 2024

Figure 5.6a: Viewpoint Locations

Figure 5.6b: Viewpoint Locations (zoomed in version)

Figure 5.7a: Visual Receptors Scoped In and Assessed in the LVIA

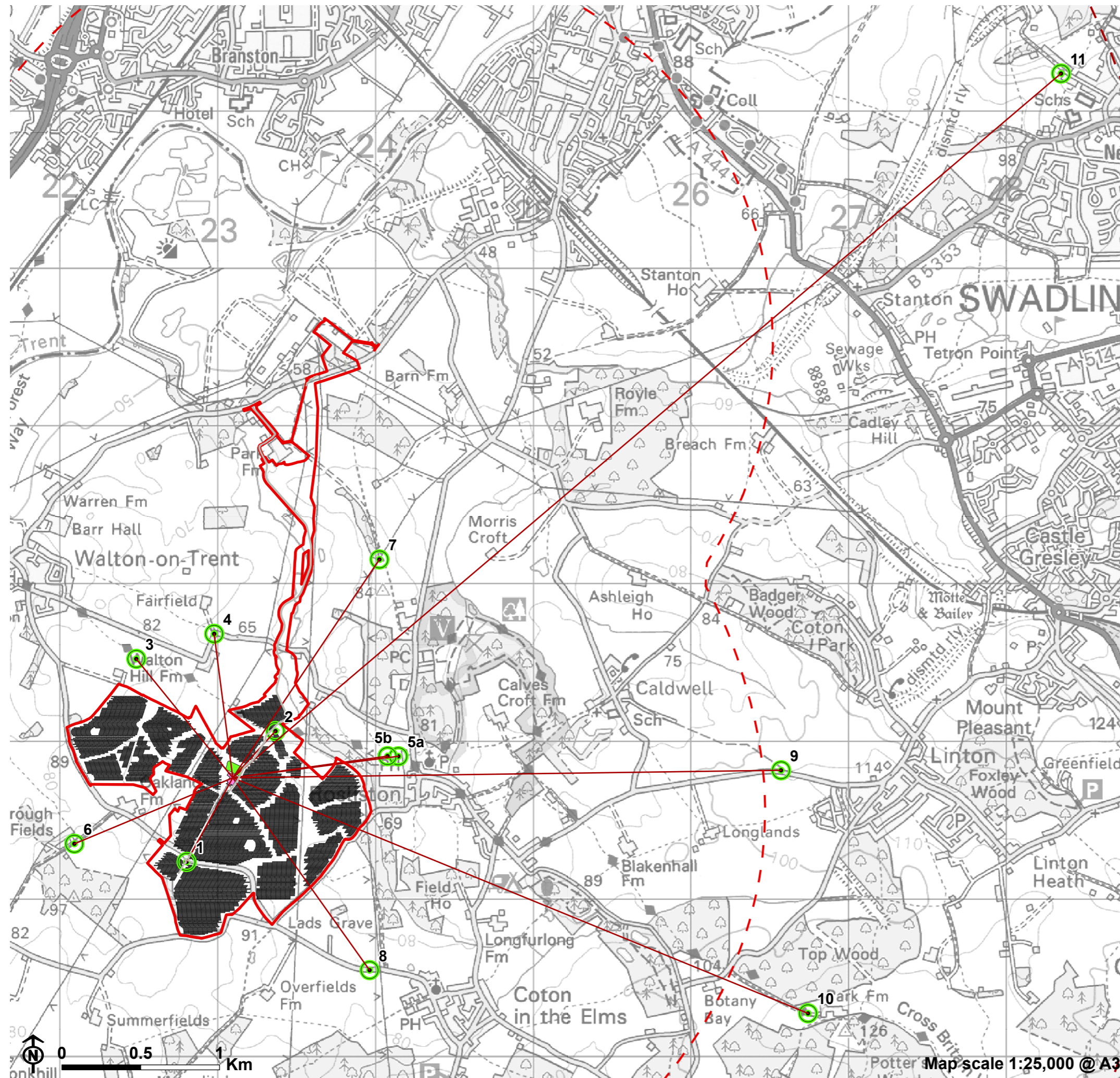
Figure 5.7b: Visual Receptors Scoped In and Assessed in the LVIA (zoomed in version)

Figure 5.8: Developments Included in the Cumulative Assessment

Figure 5.9: Property Locations Within 0.25km



Figure 5.6a: Viewpoint Locations



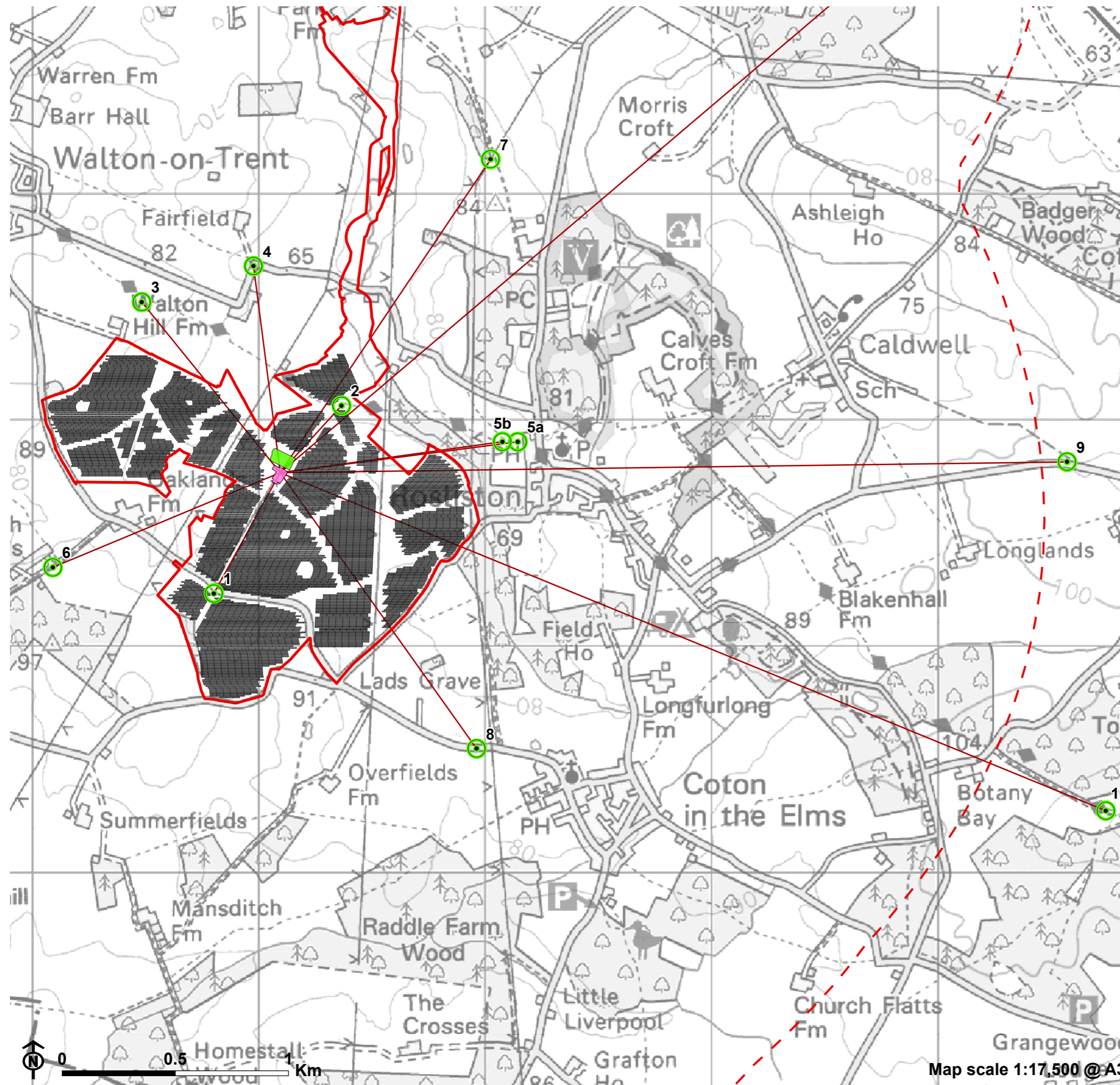
- Site Boundary
 - 2.5km from site boundary
 - 5km from site boundary
 - PV panel
 - Battery storage area
 - Substation area
 - Indicative line of sight from viewpoint to centre of the site
 - Viewpoint
- 1: Coton Road
 - 2: Cross Britain Way
 - 3: Cross Britain Way (near Walton Hill Farm)
 - 4: Rosliston Road / Footpath (near Fairfield)
 - 5a: The Chase, Rosliston
 - 5b: Footpath west of The Chase, Rosliston
 - 6: Bridleway / footpath by Borough Fields
 - 7: Footpath south of Hill Covert
 - 8: Church Street (near Coton in the Elms)
 - 9: Cauldwell Road / Bridleway to Manor Farm
 - 10: National Forest Way (at Park Farm)
 - 11: Sunnyside, Newhall

PINS reference: EN010122

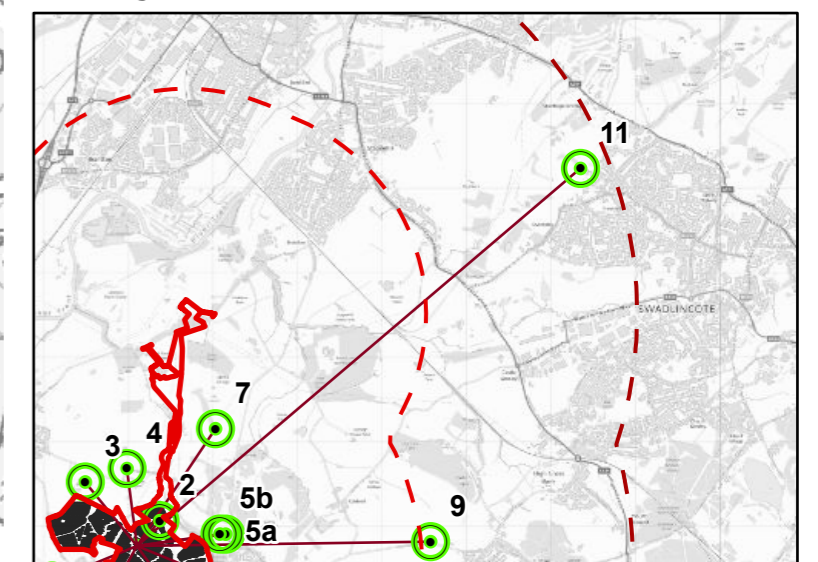




Figure 5.6b: Viewpoint Locations
(zoomed in version)



- Site Boundary
 - 2.5km from site boundary
 - 5km from site boundary
 - PV panel
 - Battery storage area
 - Substation area
 - Indicative line of site from viewpoint to centre of the site
 - Viewpoint
- | | |
|---|---|
| 1: Coton Road | 7: Footpath south of Hill Covert |
| 2: Cross Britain Way | 8: Church Street (near Coton in the Elms) |
| 3: Cross Britain Way (near Walton Hill Farm) | 9: Cauldwell Road / Bridleway to Manor Farm |
| 4: Rosliston Road / Footpath (near Fairfield) | 10: National Forest Way (at Park Farm) |
| 5a: The Chase, Rosliston | 11: Sunnyside, Newhall |
| 5b: Footpath west of The Chase, Rosliston | |
| 6: Bridleway / footpath by Borough Fields | |

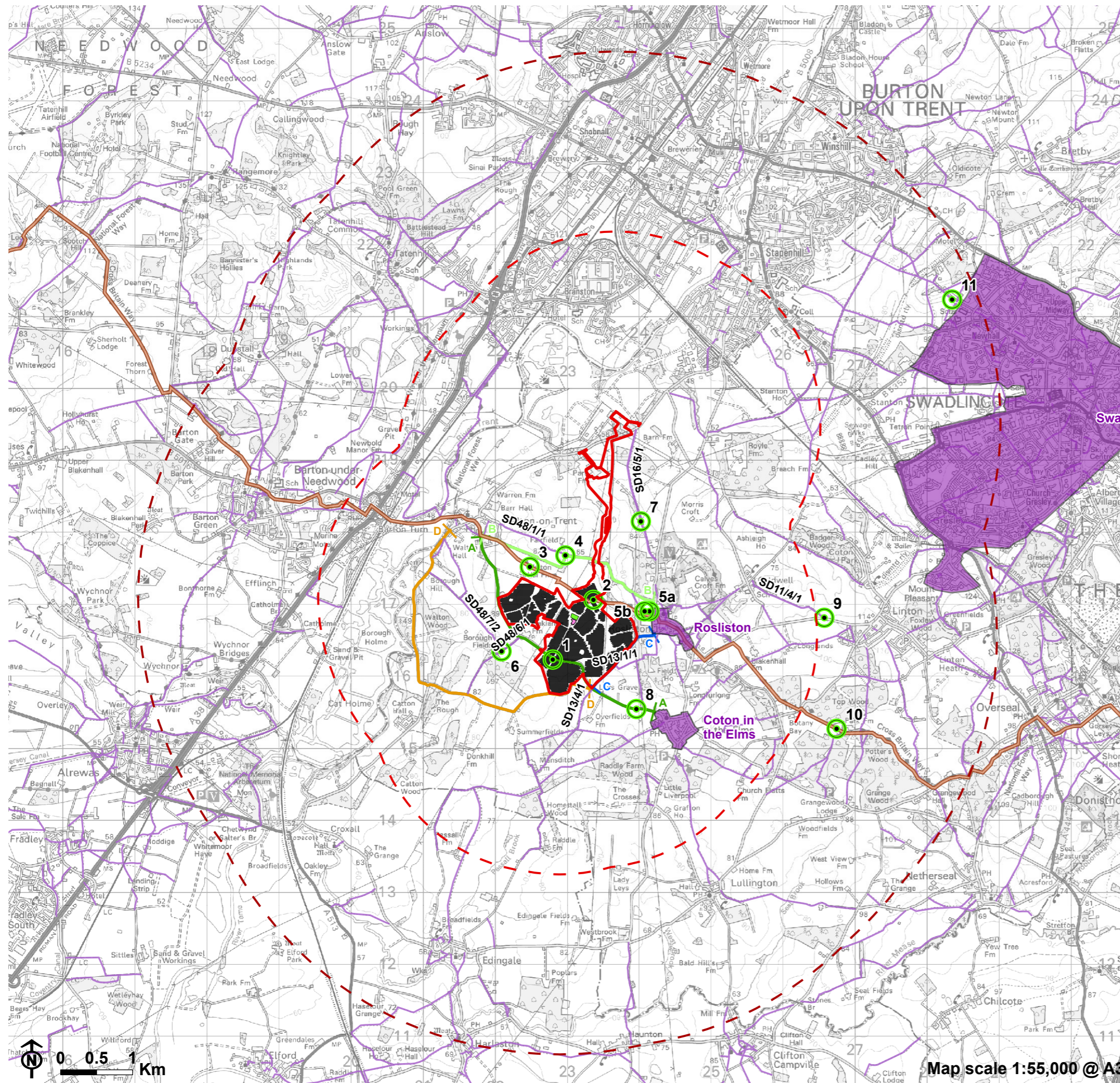


PINS reference: EN010122





Figure 5.7a: Visual Receptors Scoped in and Assessed in the LVIA



- Site Boundary
- 2.5km from site boundary
- 5km from site boundary
- PV panel
- Battery storage area
- Substation area
- Local communities within 5km
- Cross Britain Way / National Forest Way long distance footpath
- Public Rights of Way

Roads within 2.5km

- A: Coton Road/Church Street
- B: Rosliston Road
- C: Catton Lane
- D: Unnamed road
- Viewpoint

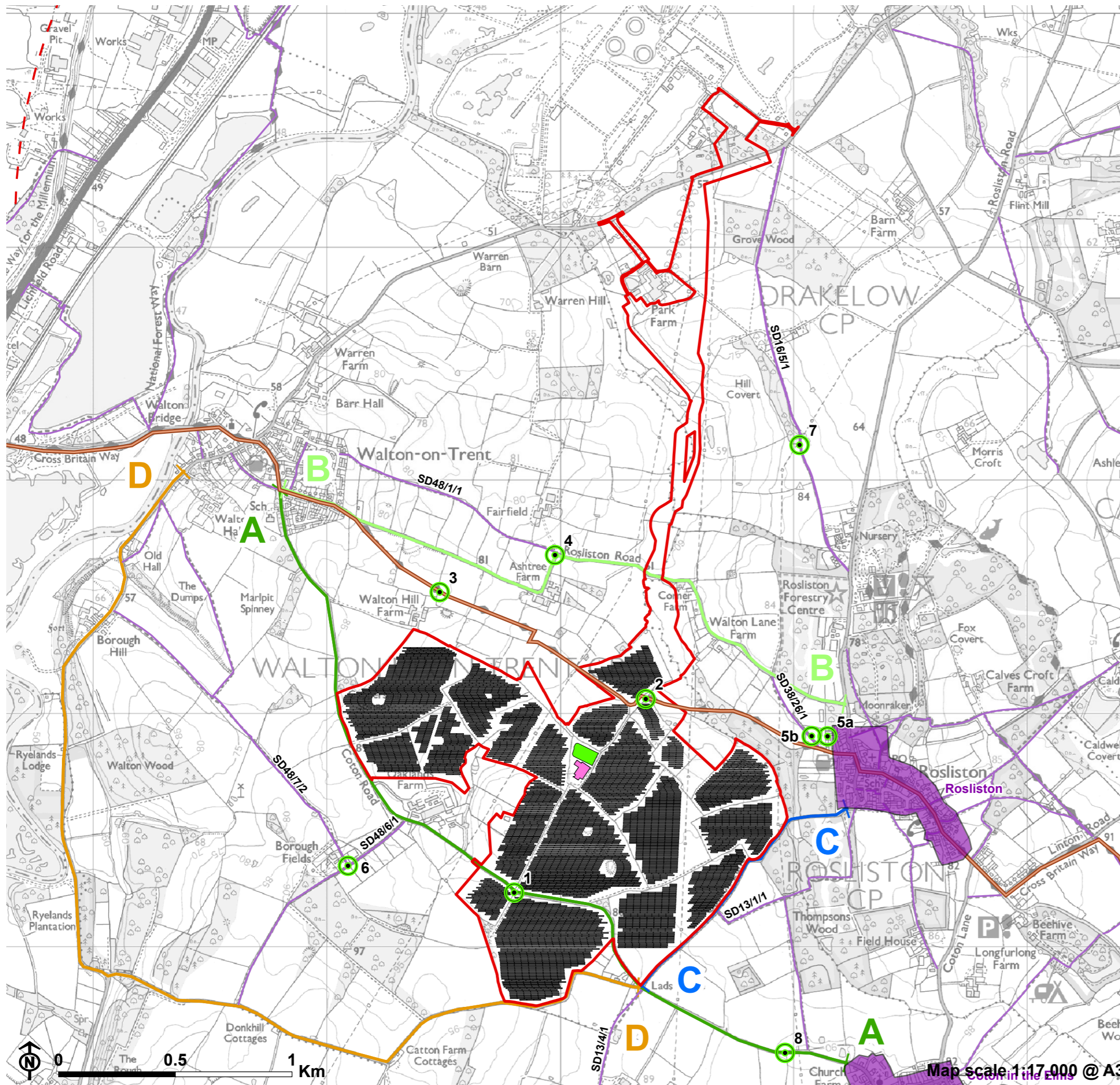
- | | |
|---|---|
| 1: Coton Road | 7: Footpath south of Hill Covert |
| 2: Cross Britain Way | 8: Church Street (near Coton in the Elms) |
| 3: Cross Britain Way (near Walton Hill Farm) | 9: Cauldwell Road / Bridleway to Manor Farm |
| 4: Rosliston Road / Footpath (near Fairfield) | 10: National Forest Way (at Park Farm) |
| 5a: The Chase, Rosliston | 11: Sunnyside, Newhall |
| 5b: Footpath west of The Chase, Rosliston | |
| 6: Bridleway / footpath by Borough Fields | |

PINS reference: EN010122

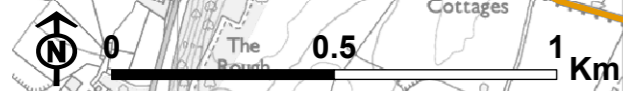




Figure 5.7b: Visual Receptors Scoped in and Assessed in the LVIA (zoomed in version)



- Site Boundary
 - PV panel
 - Battery storage area
 - Substation area
 - Local communities within 5km
 - Cross Britain Way / National Forest Way long distance footpath
 - Public Rights of Way
- Roads within 2.5km**
- A: Coton Road/Church Street
 - B: Rosliston Road
 - C: Catton Lane
 - D: Unnamed road
 - Viewpoint

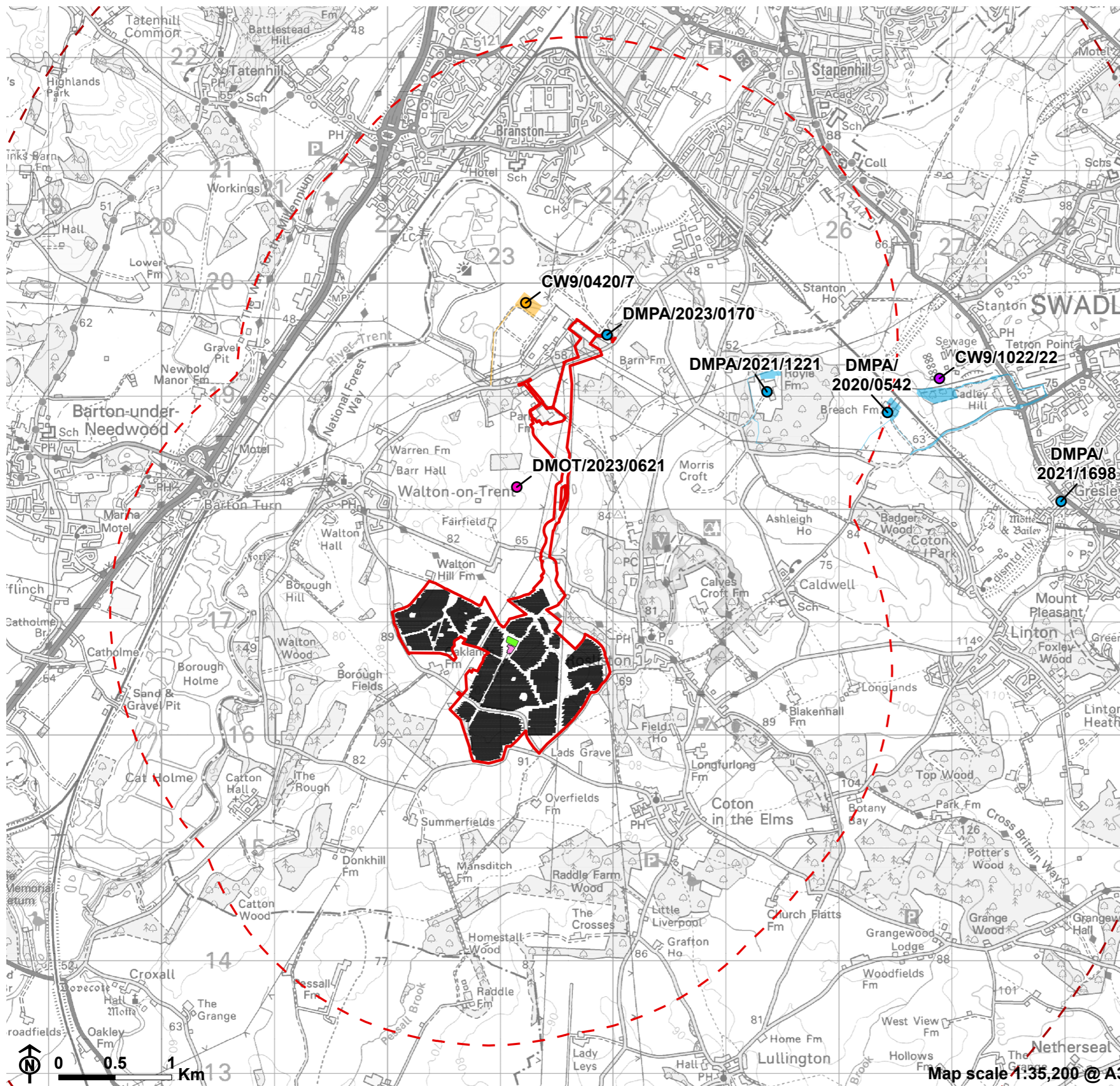


PINS reference: EN010122

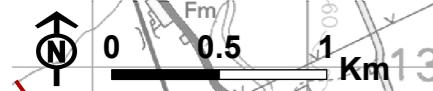




Figure 5.8: Developments included in the Cumulative Assessment



- Site Boundary
- 2.5km from site boundary
- 5km from site boundary
- PV panel
- Battery storage area
- Substation area
- Proposed Developments**
- Application
- Permitted
- Scoping
- Under Construction



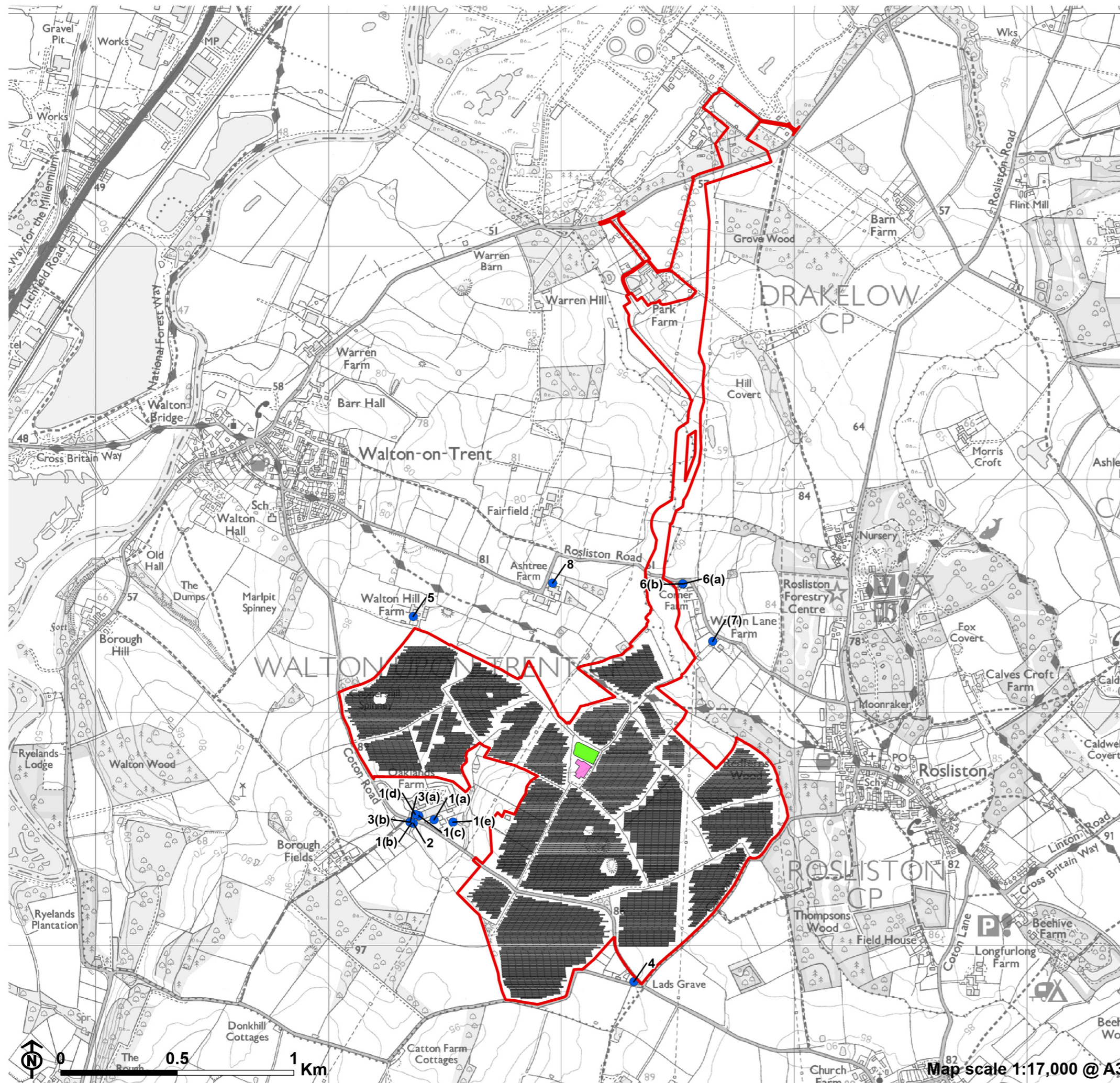
Map scale 1:35,200 @ A3

PINS reference: EN010122

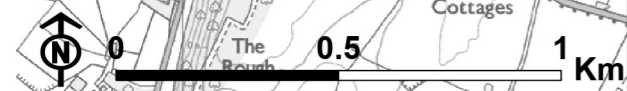




Figure 5.9: Location of Properties Considered in the RVAA



- Site Boundary
- PV panel
- Battery storage area
- Substation area
- Residential property
 - 1(a): Oaklands Farm
 - 1(b): No. 1 Oaklands Farm
 - 1(c): No. 3 Oaklands Farm
 - 1(d): No. 4 Oaklands Farm
 - 1(e): Twin Oaks
 - 2: Pennywort Cottage
 - 3(a): Orchard Cottage
 - 3(b): Boroughfields Farm Cottage
 - 4: Ladsgrave Cottage
 - 5: Walton Hill Farm
 - 6(a): Corner Farm
 - 6(b): New Corner Farm
 - 7: Old Byre (Walton Lane Farm)
 - 8: Ashtree Farm



PINS reference: EN010122

